

< About the Goto Tourism and Historical Materials Museum >

The Goto Tourism and Historical Materials Museum was constructed to commemorate Fukue City's (now part of Goto City) 35th anniversary in 1989. This museum, located on Old Fukue Castle's grounds, features exhibits on Goto's religious and cultural history as well as local cultural artifacts to help visitors understand Goto's progress from the Stone Age to present day. The museum also includes an introduction to tourist spots and Goto's traditional events.

< Commemorative Stamp >



Aiming for World Heritage!!!

Churches on the Tentative List of World Heritage Sites



Old Gorin Church “旧五輪教会堂” is a unique church featuring a Japanese style exterior with a Gothic style interior. This church was designated as an important cultural site by Japan in 1999.



Egami Church “江上天主堂” was built by Yosuke Tetsukawa “鉄川与助” and features a wooden Romanesque style. It was designated as an important cultural site by Japan in 2008.

Admission Information

●Hours●

Jan.~May 9:00~17:00 (last admission : 16:30)
 June~Sep. 9:00~18:00 (last admission : 17:30)
 Oct.~Dec. 9:00~17:00 (last admission : 16:30)

●Fees●

	Individual price	Group price (over 20 people)
Elementary/Middle School Students	110円	90円
High School/College Students	170円	140円
Adults	230円	190円

<Free Entrance>
 ・Saturday and Sunday, elementary/middle school students living in Goto City may enter for free.
 ・Visitors with Disabilities
 ・Children in Preschool

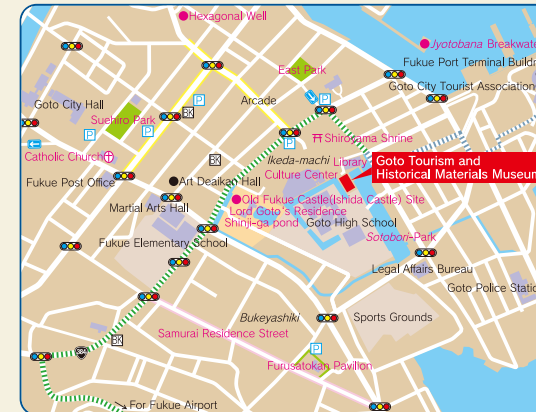
●Closed●

December 29th ~ January 3rd / Mondays (December 1st ~ April 30th)

●Museum Rules●

- 1 Please be quiet so as not to disturb others.
- 2 Please do not touch anything unless labeled otherwise.
- 3 Storage lockers available at the entrance for free.
- 4 Please do not eat or drink inside the museum.
Taking pictures of the exhibits is not allowed.
- 5 Smoking is prohibited.

●Map●



●Access●

<Ferry>

Nagasaki – Fukue Port (3 hrs. and 10 min.)
 Hakata – Fukue Port (8 hrs. and 30 min.)
 ※From Fukue Port ...By Foot (About 7 min.)

<Airplane>

Nagasaki – Fukue Airport (30 min.)
 Fukuoka – Fukue Airport (40 min.)
 ※From Fukue Airport ...10 min. by bus / 5 min. by taxi

<Jetfoil>

Nagasaki – Fukue Port (1 hr. and 25 min.)
 ※From Fukue Port ...By foot (7 min.)

Goto Tourism and Historical Materials Museum

853-0018 Nagasaki Prefecture, Goto,Ikeda-cho 1-4

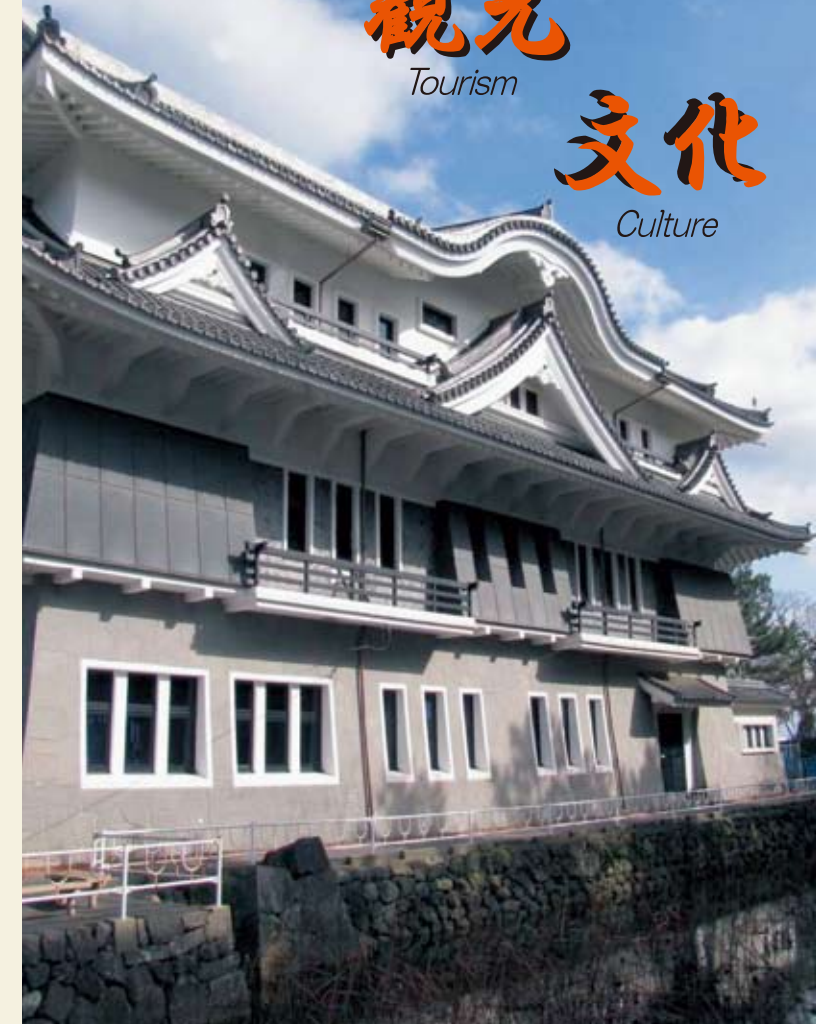
Telephone:0959-74-2300 FAX:0959-74-2362

Homepage:<http://city.goto.nagasaki.jp> E-mail:rekishi@city.goto.lg.jp

歴史
History

観光
Tourism

文化
Culture



五島観光歴史資料館

Goto Tourism and Historical Materials Museum

3rd Floor Exhibition – Christianity in Goto: Traditional Events and Contemporary Artifacts

〈Christian Culture in Goto〉

With the arrival of Portuguese missionaries Almeida and Lorenso in 1566 and the baptism of *Uku Sumitaka* “宇久純莞”, Christianity began to spread in *Goto*.



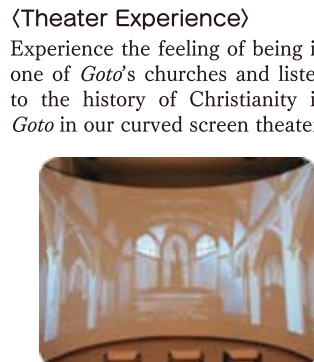
〈Oppression and Hiding〉

See the story and belongings of the Hidden Christians who lived on *Goto* throughout the 250 years of oppression under Tokugawa rule.



〈Revival and Construction of Churches〉

After the ban on religion was lifted, churches were constructed around *Goto*. We introduce them here with informative displays and models.



〈Theater Experience〉

Experience the feeling of being in one of *Goto's* churches and listen to the history of Christianity in *Goto* in our curved screen theater.

〈Traditional Events in Goto〉

Goto has many traditional events, many of which are designated as intangible cultural assets.



〈Farming and Fishing in Goto〉

Learn about pre-1950s farming and fishing equipment used in *Goto*.

2nd Floor Exhibition – History, Culture, and Religion



〈Kentou-shi and Wako〉

See movies about the Kentou-shi “遣唐使” (envoy to China) and Wako “倭寇” (Japanese pirates) and their relation to *Goto*.



Model of the Kento-shi's ship

〈Goto's Beginnings〉

Learn about *Goto's* early history and relics.

Wako picture scrolls (replica)

〈The Goto Clan and Domain〉

Learn about the origins of the *Goto Clan* “五島藩” as well as important events in its history.



Kamishimo (samurai costume)



〈The Goto Family as Viscounts〉

As nobility, the *Goto* family was active in politics and education.

〈Shrines & Buddhist Temples〉

In 695, *Goto's* first shrine, *Gosha shrine* “五社神社” was built. Many Buddhist temples in *Goto* share links with *Kukai* “空海” a famous Japanese monk.



〈Kiyu Ono〉

Kiyu Ono “大野きゆう” was a famous Haiku poet from *Goto*. He studied under *Kyoshi Takahama* “高濱虚子” and in his lifetime had 240 of his haiku selected for publication in the magazine, *Hototogisu* “ホトトギス”.

1st Floor Exhibition – Local Goods and Sightseeing



〈Local Specialties〉

See locally produced goods such as pink coral, camellia oil and more.



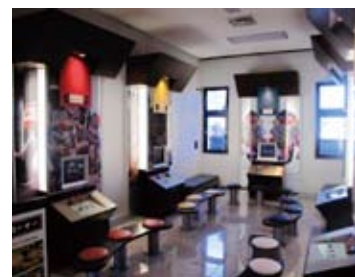
Camellia oil



Coral



Goto-tea



〈Sightseeing Guide〉

See videos about *Goto's* sightseeing hotspots and enjoy games about *Goto's* history and natural features.

〈Theater〉

Watch the movie “*Baramon-no-sora*” (approx. 20 min.)



〈Goto Archives〉

Browse books, magazines, and reports about *Goto's* history for free.

※Please get permission before entering this room.

Important Events 五島史略年表

25 M years ago	Goto is at the bottom of a freshwater lake on the Asian continent.
13 M years ago	Tectonic movements form the Goto Archipelago.
20,000 years ago	People begin to settle in Goto. (Tea field found in Kishiku)
3,000 years ago	Shirahama Shell Mounds. (Remnants from the Jomon Period.)
2,100 years ago	Earliest evidence of bovines in Japan. (Bones found in Ohama)
713 A.D.	Goto first mentioned in writing in <i>Hizen Fudoki</i> “肥前風土記”
804 A.D.	Kukai and Saicho (Japanese Monks) pass through Goto on the way to China.
806 A.D.	Kukai returns to Goto and converts Daiho-ji Temple to Shingon (a type of Buddhism).
1187 A.D.	Iemori, whose descendants become the Goto clan, arrives in Uku.
1383 A.D.	Iemori's 8th generation descendant Satoru “覚,” moves to Kishiku.
1388 A.D.	Satoru's son, Suguru “勝,” moves from Kishiku to Fukue and builds a castle.
1413 A.D.	Goto is unified under the Uku clan. Wako (Japanese pirates) begin activity around Goto.
1507 A.D.	Iemori's 16th generation descendant Kakomu “勘” loses control of Goto to Tamanoura Osamu's revolt.
1521 A.D.	Iemori's 17th generation descendant Morisada “盛定” reclaims Goto from Tamanoura.
1526 A.D.	Egawa Castle is built.
1540 A.D.	Ochoku, a leader of the Wako comes to Goto for trade. (Hexagonal Well, Minjin Shrine)
1566 A.D.	Christianity begins to spread in Goto.
1592 A.D.	The Uku Clan changes its name to Goto.
1598 A.D.	A whaling group is created in Arikawa.
1614 A.D.	Egawa Castle burns down. Christianity is prohibited.
1637 A.D.	The Ishida House (regional government office) is completed.
1641 A.D.	During Japan's period of isolation 7 watchtowers are built to spot foreign vessels.
1661 A.D.	Iemori's 22nd generation descendant Moritoshu's 3rd son Morikiyo “盛清” receives land to create Tomie.
1782 A.D.	A clan school is built in Goto.
1797 A.D.	Farmers move to Goto from Omura's Sotome “外海” area.
1813 A.D.	Inotadakata comes to Goto to create his map. His subordinate Sakabe “坂部” dies of illness in Fukue.
1863 A.D.	Fukue Castle is completed.
1868 A.D. (明治元年)	Christians are oppressed in Hisaka and Okuura.
1871 A.D. (明治4年)	The Fukue Domain becomes Fukue Prefecture.
1872 A.D. (明治5年)	Control of Fukue Castle is transferred to the army. The castle is torn down.
1879 A.D. (明治12年)	Dozaki Church is built and Osezaki Lighthouse is completed.
1900 A.D. (明治33年)	Goto Junior High School is built on Old Fukue Castle's grounds.
1912 A.D. (大正元年)	Regular transportation between Goto and Nagasaki becomes available.
1954 A.D. (昭和29年)	Fukue becomes a city.
1962 A.D. (昭和37年)	A large fire occurs in Fukue. 604 houses burn down.
1963 A.D. (昭和38年)	Fukue Airport is completed.
2004 A.D. (平成16年)	Fukue City becomes Goto City.